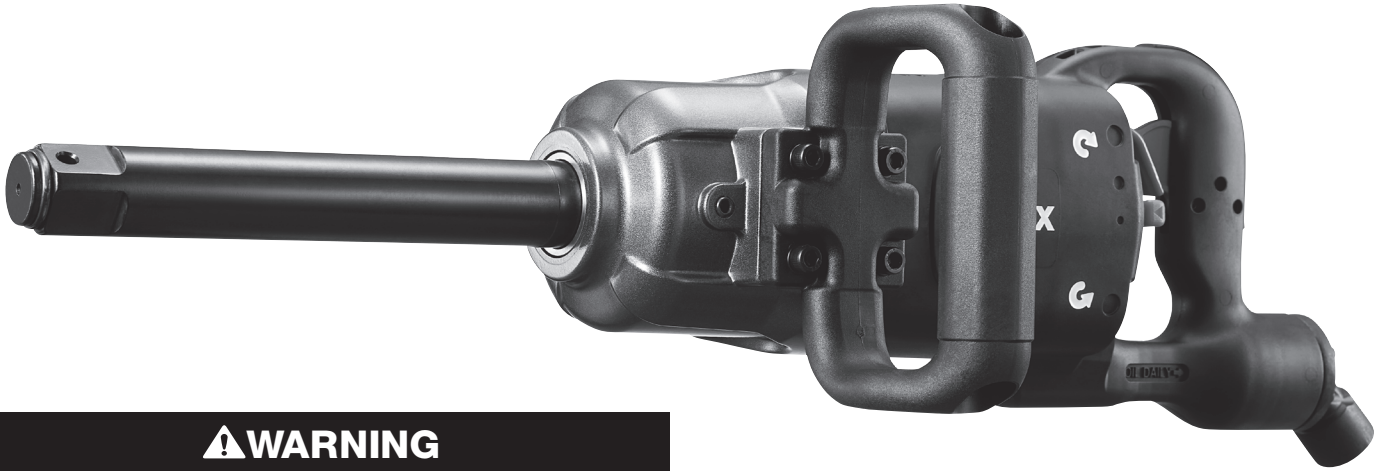


WARNING INFORMATION



⚠ WARNING

- MAX AIR PRESSURE: 90 PSIG, 6.2 BAR



ALWAYS READ
INSTRUCTIONS
BEFORE USING
POWER TOOLS



WEAR HEARING
PROTECTION



ALWAYS WEAR
SAFETY GOGGLES



AVOID PROLONGED
EXPOSURE TO
VIBRATION

⚠ WARNING

Some dust created by power sanding, sawing, grinding, drilling, and other construction activities contains chemicals known to cause cancer, birth defects or other reproductive harm. Some examples of these chemicals are:

- lead from lead-based paints,
- crystalline silica from bricks and cement and other masonry products, and
- arsenic and chromium from chemically-treated lumber.

Your risk from these exposures varies, depending on how often you do this type of work. To reduce your exposure to these chemicals: work in a well ventilated area, and work with approved safety equipment, such as those dust masks that are specially designed to filter out microscopic particles.

SPECIFICATIONS

Max. Free Speed	5,500 RPM (Reverse)
Working Torque.....	2,000 ft. lbs.
Breakaway Torque.....	3,200 ft. lbs.
Air Inlet	1/2" NPT
Recommended Hose Size	1/2" I.D.
Avg. Air Cons.	7.5 CFM
Max. Air Pressure.....	90 PSIG (6.2 BAR)
Weight (w/side handle)	15.8 lbs.
Length	22.8"
Width (w/o side handle).....	4.375"
Height.....	10.25"

FAILURE TO OBSERVE THESE WARNINGS COULD RESULT IN INJURY

This Instruction Manual Contains Important Safety Information.



READ THIS INSTRUCTION MANUAL CAREFULLY AND UNDERSTAND ALL INFORMATION BEFORE OPERATING THIS TOOL

- Always operate, inspect and maintain this tool in accordance with American National Standards Institute Safety Code for Portable Air Tools (ANSI B186.1) and any other applicable safety codes and regulations.



- For Safety, top performance and maximum durability of parts, operate this tool at 90 psig/6.2 bar max air pressure with 3/8" (depends on tool) diameter air supply hose.



- Always wear impact resistant eye protection (Users & Bystanders) when operating or performing maintenance on this tool .



- Always wear hearing protection when using this tool (Users & Bystanders). High sound levels can cause permanent hearing loss. Use hearing protection as recommended by your employer or OSHA regulation.

- Keep the tool in efficient operating condition.

- Operators and maintenance personnel must be physically able to handle bulk, weight and power of this tool.



- Keep out of reach of children.



- Air powered tools can vibrate during use. Extended exposure to vibration, repetitive motions or uncomfortable positions during use may be harmful to your hands and arms. Discontinue use of tool if discomfort, tingling feeling or pain occurs. Seek medical advice before resuming use.



- Compressed air can cause severe injury. Never direct air at yourself or others. Always turn off the air supply, drain hose of air pressure and detach tool from air supply before installing, removing or adjusting any part or accessory on this tool, or before performing any maintenance on this tool. Failure to do so could result in injury.



- Whip hoses can cause serious injury. Always check for and replace immediately any damaged, frayed or loose hoses and fittings.

- Do not operate a damaged or worn tool. Do not use quick-detach couplings at tool. See instructions for correct set-up.

- Place the tool on the work before starting the tool. Do not point or indulge in any horseplay with this tool.

- Slipping, tripping and/or falling while operating air tools can be a major cause of serious injury or death. Be aware of excess hose left on walking or work surface.



- Keep body working stance balanced and firm. Do not overreach when operating this tool.

- Anticipate and be alert for sudden changes in motion during use of any power tool.

- Do not carry tool by hose. Protect the hose from sharp objects and heat.

- Note direction of rotation BEFORE operating this tool.

- Tool shaft may continue to rotate briefly after throttle is released. Avoid direct contact with accessories during and after use. Gloves will reduce the risk of cuts or burns.



- Keep away from rotating end of tool. Do not wear jewelry or loose clothing. Secure long hair. Scalping can occur if hair is not kept away from tool and accessories. Choking can occur if neckwear is not kept away from tool and accessories.



- This tool is not insulated against electric shock.

- This tool must not be used in explosive atmospheres.

- Do not lubricate tools with flammable or volatile liquids such as kerosene, diesel or jet fuel.



- Do not force tool beyond its rated capacity.



- Use only approved replacement parts and accessories recommended by Sunex Tools[®].

- Servicing and repairs should only be made by an authorized service center.

- Do not use (or modify) the tool for any other purpose than that for which it was designed without consulting the manufacturer's authorized representative.

- Use only impact sockets and accessories on this tool. Do not use hand and/or chrome sockets and accessories.

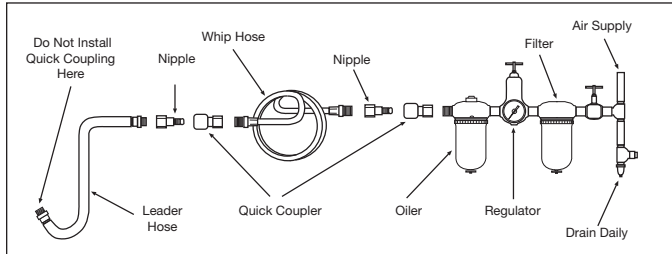
- Impact wrenches are not torque control devices. Fasteners with specific torque requirements must be checked with suitable torque measuring devices after installation with an impact wrench.

- Repetitive motions or exposure to vibration may be harmful to hands or arms.



WARNING: This product can expose you to chemicals including nickel which is known to the State of California to cause cancer and birth defects or other reproductive harm. For more information go to www.P65Warnings.ca.gov.

WARNING INFORMATION



AIR SUPPLY

Tools operate on a wide range of air pressures. It is recommended that air pressure of these tools measures 90 psig at the tool with the trigger fully depressed and no load applied to the tool. Higher pressure (over 90 psig; 6.2 bar) raises performance beyond the rated capacity of the tool, which will shorten tool life and could cause injury.

Always use clean, dry air. Dust, corrosive fumes and/or water in the air line will cause damage to the tool. Drain water from air lines and compressor prior to running tool. Clean the air inlet filter screen weekly. The recommended hookup procedure can be viewed in the above figure.

The air inlet used for connecting air supply has standard 1/2" NPT. Line pressure should be increased to compensate for unusually long air hoses (over 25 feet). Minimum hose diameter should be 1/2" I.D. and fittings should have the same inside dimensions and be tightly secured.

Ensure an accessible emergency shut off valve has been installed in the air supply line and make others aware of its location.

LUBRICATION

Lubricate the air motor daily with high quality air tool oil. If no air line oiler is used, run 1/2 oz. of oil through the tool. The oil can be squirted into the tool air inlet or into the hose at the nearest connection to the air supply, then run the tool. A rust inhibitive oil is acceptable for air tools.

WARNING: After an air tool has been lubricated, oil will discharge through the exhaust port during the first few seconds of operation. The exhaust port must be covered with a towel before applying air pressure to prevent serious injury.

OPERATION

This tool is an impacting tool and not a torque meter. When specific torque is required, it must be checked with a torque meter after fitting the fastener with the impact. This impact wrench is rated at 1" SAE bolt size. Rating must be downgraded for spring U bolts, tie bolts, long cap screws, double depth nuts, badly rusted conditions and spring fastener, as they absorb much of the impact power. When possible, clamp or wedge the bolt to prevent spring back.

Soak rusted nuts in penetrating oil and break rust seal before removing with impact wrench. If nut does not start to move in three to five seconds, use a larger size impact wrench. Do not use impact wrench beyond rated capacity as this will drastically reduce tool life.

The reversing valve is used to change the direction of the tool. When the valve is out, the tool is in forward or right hand direction. When the valve is pushed in, the tool is in reverse or left hand direction.

NOTE: Always turn off the air supply, drain hose of air pressure and detach tool from air supply before installing, removing or adjusting any accessory on this tool, or before performing any maintenance on this tool.

NOTE: Actual torque on a fastener is directly related to joint hardness, tool speed, condition of socket and the time the tool is allowed to impact. Use the simplest possible tool to socket hook up. Every condition absorbs energy and reduces power.

NOTE: During operation, safety goggles must always be worn to guard against flying debris (users and bystanders).

TROUBLESHOOTING

Other factors outside the tool may cause loss of power or erratic action. Reduced compressor output, excessive drain on the air line, moisture or restrictions in air pipes or the use of hose connections of improper size or poor conditions may reduce air supply. Grit or gum deposits in the tool may cut power and may be corrected by cleaning the air strainer and flushing out the tool with gum solvent oil or an equal mixture of SAE #10 and kerosene. If outside conditions are in order, disconnect tool from hose and take tool to your nearest authorized service center.

Limited Warranty...

SUNEX INTERNATIONAL, INC. WARRANTS TO ITS CUSTOMERS THAT THE COMPANY'S SUNEX TOOLS[®] BRANDED PRODUCTS ARE FREE FROM DEFECTS IN WORKMANSHIP AND MATERIALS.

Sunex International, Inc. will repair or replace its Sunex Tools[®] branded products which fail to give satisfactory service due to defective workmanship or materials, based upon the terms and conditions of the following described warranty plans attributed to that specific product. This product carries a ONE-YEAR warranty. During this warranty period, Sunex Tools[®] will repair or replace at our option any part or unit which proves to be defective in material or workmanship.

Other important warranty information...

This warranty does not cover damage to equipment or tools arising from alteration, abuse, misuse, damage and does not cover any repairs or replacement made by anyone other than Sunex Tools[®] or its authorized warranty service centers. The foregoing obligation is Sunex Tools' sole liability under this or any implied warranty and under no circumstances shall we be liable for any incidental or consequential damages.

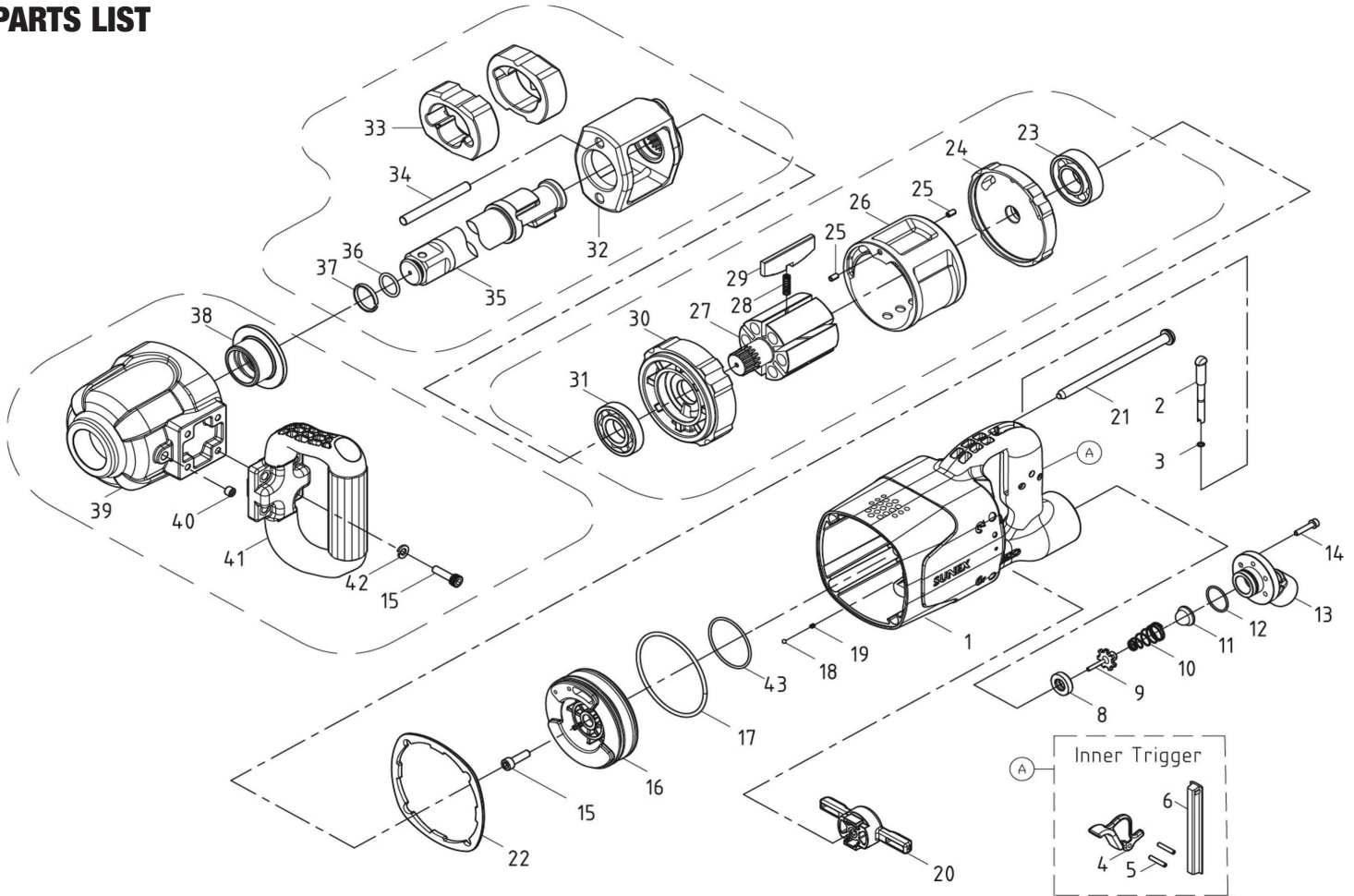
Note: Some states do not allow the exclusion or limitation of incidental or consequential damages, so the above limitation or exclusion may not apply to you. Return equipment or parts to Sunex Tools[®], or an authorized warranty service center, transportation prepaid. Be certain to include your name and address, evidence of the purchase date, and description of the suspected defect.

If you have any questions about warranty service, please write to Sunex Tools[®]. This warranty gives you specific legal rights and you may also have other rights which vary from state to state. Repair kits and replacement parts are available for many of Sunex Tools[®] products regardless of whether or not the product is still covered by a warranty plan.

Shipping Address: Sunex Tools[®] • 315 Hawkins Rd. • Travelers Rest, SC 29690

Mailing Address: Sunex Tools[®] • P.O. Box 4215 • Greenville, SC 29608

PARTS LIST



Item	Part No	Parts Name	Qty
1	RS0102601	HOUSING	1
2	RS5325602	PIN VALVE ROD	1
3	RS533702	O-RING	1
4	RS0102604	TRIGGER	1
5	RS5325605	SPRING PIN (EACH)	2
6	RS5325606	RUBBER PROTECTOR	1
8	RS5325608	OIL SEAL	1
9	RS5325609	PIN VALVE ROD	1
10	RS5325610	CONE SPRING	1
11	RS5325611	FILTER	1
12	RS5325612	O-RING	1
13	RS5325613	AIR INLET	1
14	RS5325614	SCREW (EACH)	4
15	RS530549	SCREW (EACH)	5
16	RS5325616	REVERSE LEVER	1
17	RS5325617	O-RING	1
18	RS5325406	STEEL BALL	1
19	RS533714	SPRING	1
20	RS0102620	REVERSE LEVER	1
21	RS5325621	SCREW (EACH)	4
22	RS79222	GASKET	1
23	RS5325623	BALL BEARING	1

Item	Part No	Parts Name	Qty
24	RS5325624	REAR PLATE	1
25	RS5325625	SPRING PIN (EACH)	2
26	RS5325626	CYLINDER	1
27	RS5325627	ROTOR	1
28	RS530536	SPRING (EACH)	6
29	RS5325629	BLADE (EACH)	6
30	RS5325630	FRONT PLATE	1
31	RS5325631	BALL BEARING	1
32	RS5325632	HAMMER CAGE	1
33	RS5325633	HAMMER (EACH)	2
34	RS5325634	HAMMER PIN (EACH)	2
35	RS671003	ANVIL ASSEMBLY (6") (INCL. #36-37))	1
36		O-RING	1
37		ANVIL COLLAR	1
38	RS110129	BUSHING	1
39	RS010235	FRONT CASING	1
40	RS110131	PIPE PLUG	1
41	RS5325641	HANDLE	1
42	RS530550	WASHER (EACH)	4
43	RS5325643	O-RING	1
	RSSX01026PLK	PRODUCT LABEL KIT	1